

Europe!!!!

Europe

Welcome to Europe!
Europe has the smallest and largest countries in it and the second most active volcano!! It's also a continent with 50 countries.



Natural Resources

Much of your daily food comes from Europe such as wheat, potatoes, vegetables, oranges and many more. Although much food comes from Europe only 35% of it is farm land!

The Alps

Did you know the Alps are the biggest mountain range in Europe! The Alps spread across 7 countries! The Alps are split into 6 different regions: The Swiss Alps, The French Alps, The Austrian Alps, The Italian Alps, The Bavarian Alps and The Julian Alps!

Population

There are about 740 million people in Europe! Although Europe is very big it is only 9.78% of the world's population which is not much out of 100%!

by Dedei ♥

SEVILLE Fair


in April




Add 2 or more fractions

White Rose Maths

1 Complete the additions.

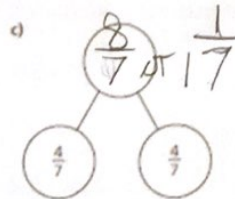
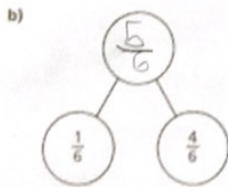
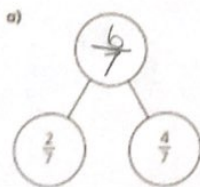
a)  $\frac{1}{5} + \frac{2}{5} = \frac{3}{5}$

b)  $\frac{1}{5} + \frac{3}{5} = \frac{4}{5}$

c)  $\frac{3}{8} + \frac{3}{8} = \frac{6}{8}$

d)  $\frac{3}{8} + \frac{1}{8} = \frac{4}{8}$

2 Complete the part-whole models.



d) Which part-whole model is the odd one out? (

Explain your choice to a partner.

Did you both have the same answer? Yes

3 Complete the additions.

a) $\frac{3}{7} + \frac{3}{7} = \frac{6}{7}$

e) $\frac{8}{11} + \frac{6}{11} = \frac{14}{11} = \frac{13}{11}$

b) $\frac{3}{7} + \frac{4}{7} = \frac{7}{7} = 1$

f) $\frac{4}{11} + \frac{4}{11} + \frac{6}{11} = \frac{14}{11} = \frac{13}{11}$

c) $\frac{4}{5} + \frac{3}{5} = \frac{7}{5} = \frac{12}{5}$

g) $\frac{3}{11} + \frac{3}{11} + \frac{8}{11} = \frac{14}{11} = \frac{13}{11}$

d) $\frac{8}{5} + \frac{6}{5} = \frac{14}{5} = \frac{12}{5}$

h) $\frac{3}{7} + \frac{3}{7} + \frac{8}{7} = \frac{14}{7} = 2$

4

$$\frac{\square}{4} + \frac{2}{4} = \frac{9}{4}$$

What could the missing numerators be?

Give four different possibilities.

$$\frac{6}{4} + \frac{3}{4} = \frac{9}{4}$$

$$\frac{5}{4} + \frac{4}{4} = \frac{9}{4}$$

$$\frac{8}{4} + \frac{1}{4} = \frac{9}{4}$$

$$\frac{9}{4} + \frac{0}{4} = \frac{9}{4}$$

5

Tommy is adding fractions.



$$\frac{3}{4} + \frac{3}{4} = \frac{6}{8}$$

Explain why Tommy is incorrect.

he ~~at~~ added the
bottom

6

Complete the number sentences.

$$a) \frac{3}{8} + \frac{4}{8} = \frac{7}{8}$$

$$e) \frac{4}{9} + \frac{9}{9} = \frac{13}{9} = 1 \frac{4}{9}$$

$$b) \frac{3}{8} + \frac{5}{8} = 1$$

$$f) \frac{4}{9} + \frac{12}{9} = \frac{16}{9} = 1 \frac{7}{9}$$

$$c) \frac{3}{16} + \frac{13}{16} = 1$$

$$g) \frac{5}{7} + \frac{4}{7} + \frac{5}{7} = 2$$

$$d) \frac{4}{9} + \frac{5}{9} = \frac{11}{9} = 1 \frac{2}{9}$$

$$h) \frac{5}{7} + \frac{8}{7} + \frac{5}{7} = 3$$

7

Rosie, Whitney and Teddy have each been for a walk.

Rosie walked $\frac{5}{8}$ km.

Whitney walked $\frac{2}{8}$ km.

Teddy walked $\frac{3}{8}$ km.

a) How far did they walk altogether?

b) Jack also went for a walk.

Altogether the four children walked 3 km.

How far did Jack walk?

$1 \frac{7}{8}$
 ~~$1 \frac{10}{8}$~~
 ~~$1 \frac{10}{8}$~~
 3 km
 3 km